

Leen Valley

Area Committee Executive Summary

Unofficial November 2012 Data

Ward Priorities

Theme	Priorities	Key Actions	Outcome	Lead/s
Safer	To increase the number of people signed up and using the Nottinghamshire Alert Scheme	To use the Neighbourhood Action Teams potential to publicise the Alert Scheme at every opportunity To evaluate the partnership work, number of signups and its effectiveness	Improved Crime prevention, crime detection and solution Increase in beat statistics over a 6 month period have shown an increase over a 6 month period of between 162% and 278% across two beats	Broxtowe and Hyson Green Policing
Neighbourhoods	Improve ways people can get together Reduce litter, dog fouling and fly tipping Improve parking issues especially around schools	Support Community groups and organisations to hold Events where people can get together Kennington Road clean up, public meeting and work to re-enthuse the TRA, conducted as a piece of partnership work Public awareness work and engagement of CPO's to follow through with enforcement Lining, no waiting restrictions, and speed reducing initiatives Engagement with Schools Beat Teams working to educate the public and penalise offending drivers	Increased community engagement will enable effective solutions to be found to community problems Improved community relations with each other and with agencies Reduced resources spent in cleaning the area and a cleaner environment for the citizens Less illegal and inconsiderate parking in affected areas, reduced congestion in Neighbourhoods, safer driving conditions and penalties for offending drivers A mix of single and double yellow lining, waiting restrictions is to be consulted upon in January	NCC and NCH NCC, Police
Families	Improve play, youth and elderly facilities in the area including parks and open spaces	Support to develop football cricket, environmental and play facilities on Robert Shaw Field Scoping of young people's facilities available in and around the Ward to develop understanding of young people's needs	Football and cricket facilities and bio-diverse habitat to be launched in first part of 2013 Reduced antisocial behaviour through signposting to diversionary activities	Robert Shaw School, NCC, Police, Play and Youth Services

		<p>Signposting to activities</p> <p>Support to engage with young people in Kennington Road and Ainsley Estates</p>		Play and Youth Services
Health	<p>Focus on cardiovascular disease, raising awareness of risk factors and signpost to activities to reduce risk factors</p>	<p>Scoping out health issues that are most prevalent in the Ward</p> <p>Scoping out services available and where people are using them in response to finding that services delivered outside Leen Valley Ward</p> <p>Production of a booklet outlining Services available to people in the area</p> <p>Work with Schools and Children's Centres in the most deprived areas of the Ward to enable Residents to engage in health promoting activities</p>	<p>Improved use of Services from local Residents and improved understanding of the health issues of Residents</p>	Health, NCC, Schools, Children's Centres
Working	<p>Provide opportunities to develop skills for work by engaging in volunteering and Community Activities and signposting into opportunities to improve employment prospects</p>	<p>Work with Best and Working Links to determine how they engage in work in Leen Valley</p>		

Community Engagement

Events Delivered

Event	Lead Partners	Date/Time	Venue
Kennington Road Clean Up	NCC, NCH	31 st October 8.30 – 1.00 pm	Streets around Kennington Road and Park
Ainsley Local Action Group	NCC, Police	7 th November 6.30 – 8.30	Robert Shaw School
Kennington Road Public Meeting	NCC, NCH, Radford	20 th November 6.00 – 7.00 pm	Southwold School
Lighting up Aspley and Joint Aspley and Leen Valley Budget Consultation	NCC	24 th November 6.00 pm	Bluecoat School

Future Events and Activities Planned

Event	Lead Partners	Date/Time	Venue
Trentham Drive Traffic drop-in	NCC	16 January 2012 6.00pm–7.00pm	Aspley Lane Salvation Army
Beechdale Local Action Group And Budget Consultation	NCC, Police	16 January 2012 7.00 – 8.30	Aspley Lane Salvation Army
Ward Walk	NCC	16 January 10.00 am	To be determined
New Whitemoor Residents	NCH	31 January 6.30 – 8.30	Nayburn Court

Community Engagement

Ward Walks

Area/Estate	Date/Time	Meeting Place
Ring road section between Crown Island and Nuthall Road	3rd December 2012	Beechdale Baths

Community Meetings

Event	Date	Venue
New Whitemoor Residents Meeting	1st November, 6.30 - 8.30 pm	New Whitemoor Baptists Church
Ainsley Tenants and Residents	7 th November, 6.00 – 6.30 pm	Robert Shaw School
New Whitemoor Residents Meeting	29 th November, 6.00 - 8.30 pm	Nayburn Court

Finance

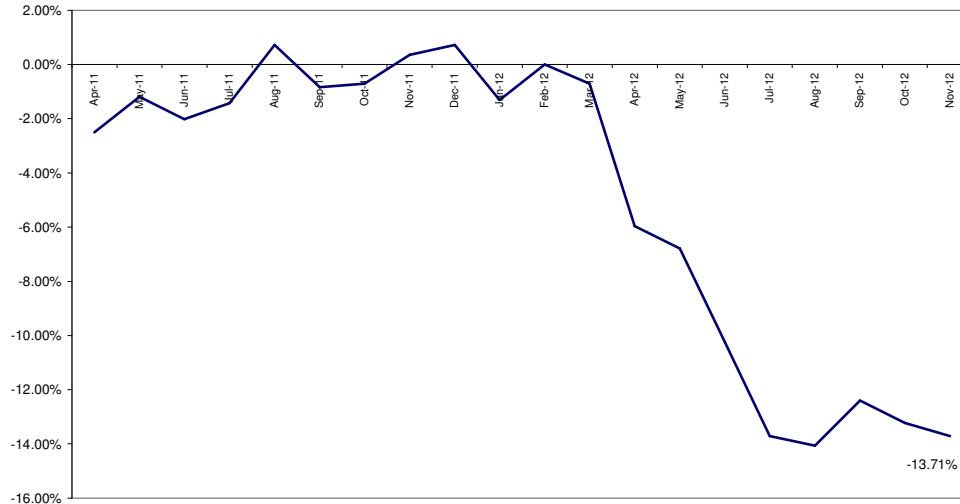
Ward Councillor Budgets	
Total Amount allocated this period	£850
Budget Remaining unallocated (inc. of 2012-13 allocation)	£47,591

Area Capital Fund	
Total Amount allocated this period	£14,000
Total Amount decommitted this period	£5,000
Budget Remaining unallocated (inc. of 2012-13 allocation)	£10,088

Others – Section 106, NCH Environmentals	
None this period	

Crime

All Crime in Leen Valley -
% Change over 2010/11 Baseline (Rolling 12 Month)



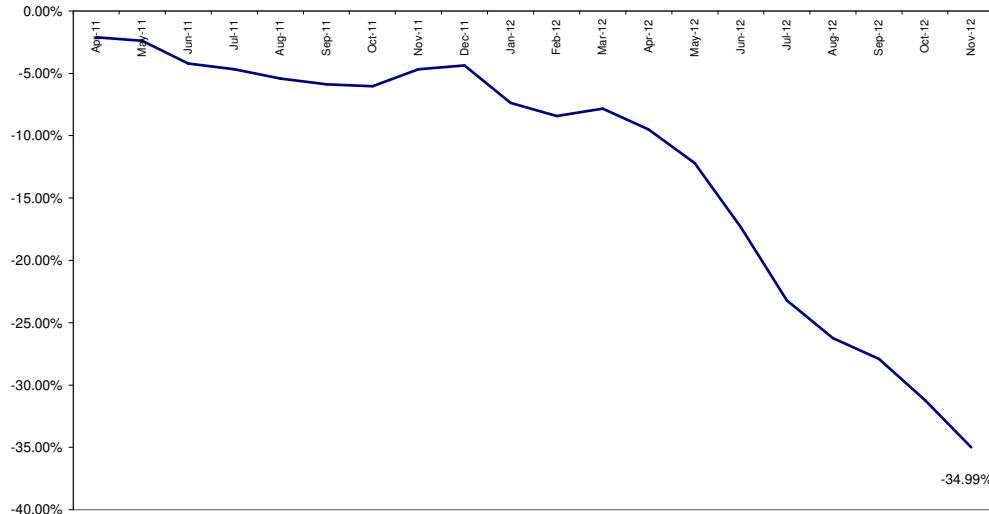
Red		
Amber		
Green*	4 fewer crimes	-6.45%

*Refers to November 2012 compared to November 2011

- In November 2012 (compared to November 2011) All Crime in Leen Valley has reduced by 6.45% (4 crimes, see above RAG rating).
- The above graph compares All Crime volume over the previous 12 months to a 2010/11 baseline. On this more long term measure there has been a reduction of 13.71%.
- Year to date (compared to the corresponding period last year) there has been a reduction of 18.44%.

All ASB

All ASB in Leen Valley -
% Change over 2010/11 Baseline (Rolling 12 Months)



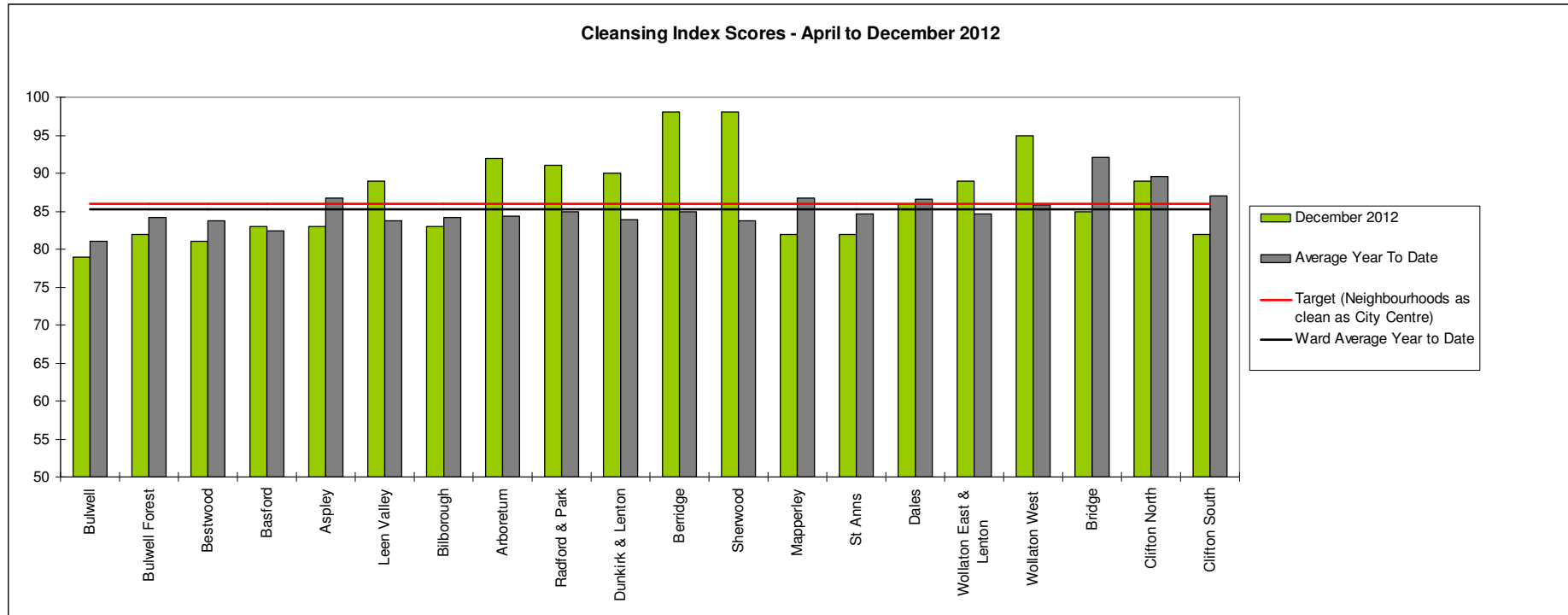
Red		
Amber		
Green*	25 fewer calls	-52.08%

*Refers to November 2012 compared to November 2011

- In November 2012 (compared to November 2011) there has been a reduction in All ASB of 52.08% (25 calls, see above RAG rating).
- The above graph compares the volume of All ASB over the previous 12 months to a 2010/11 baseline. On this measure there has been a reduction of 34.99%.
- Year to date (compared to the corresponding period last year) there has been a reduction of 39.22%.

Cleanliness Index

This graph shows the position of your ward compared to other Wards



The “neighbourhood as clean as the city centre” benchmark target on cleanliness is to achieve a score of 86% in every ward. The 86% target is shown in red in the above graph.

To calculate the Cleanliness Index (CI) an agreed number of transects are surveyed across an area covering a range of land types. Each site surveyed is awarded a cleanliness grade based on a 7 point scale from A to D where Grade A: – no litter, and Grade D: - heavily littered. The maximum possible score of 100 is achieved when all sites achieve Grade A.

The Code of Practice for Litter and Refuse (COPLAR) requires councils to strive to reach an ‘acceptable’ standard of cleanliness (grade B or better) across the Council area. Grade A is the ultimate goal and is how a site should be immediately after sweeping but is almost impossible to maintain for any length of time. For example, a grade A site is completely free of litter – one cigarette butt takes it down to B+.

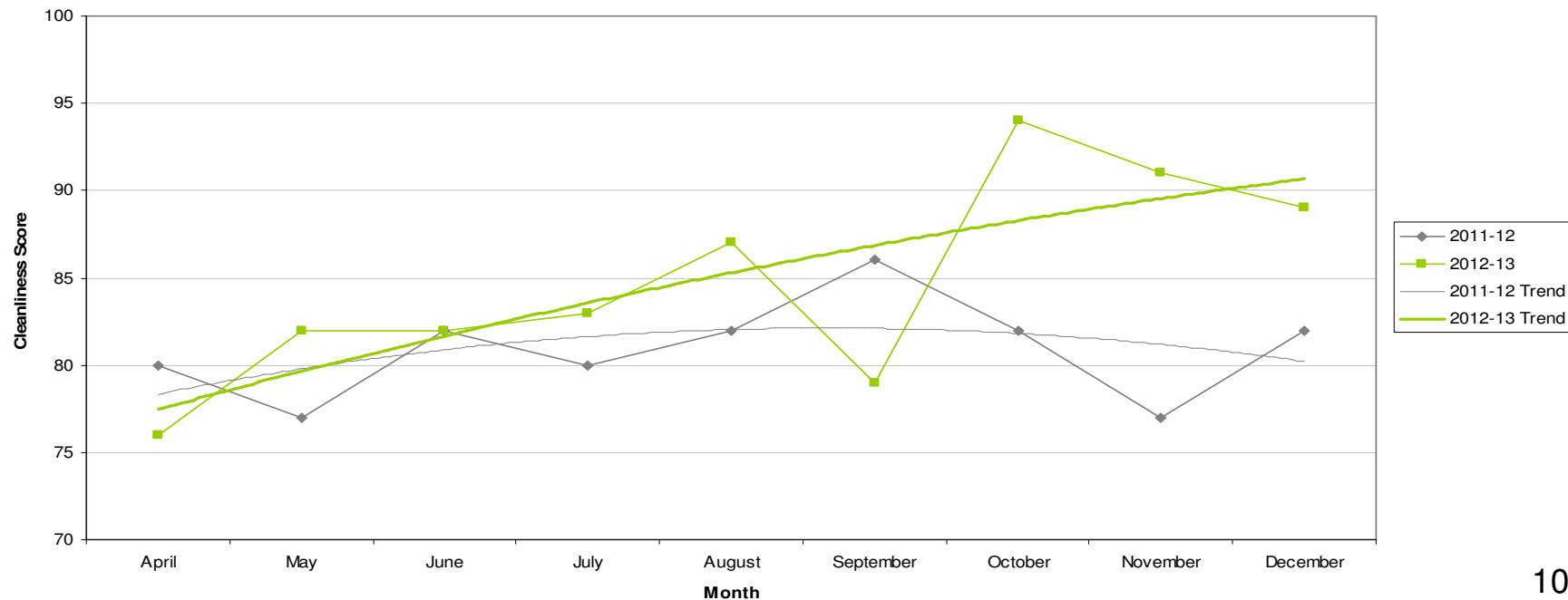
To achieve the manifesto commitment of Neighbourhoods as clean as the City Centre a target of 86 is required as that was the CI for the City Centre in May 2011. To give some context if all areas surveyed achieved a grade ‘B’ standard, this would equate to a cleanliness index of 67.

Cleanliness Index

Cleanliness Index Score	89
Performance compared to previous year	↗
Performance compared to neighbourhoods target of 86	↗

- All data refers to a comparison with the previous year's month
- It is proposed that performance over time graphs be used for each indicator
- Historic data for comparison is not available for dog fouling

Cleanliness Index

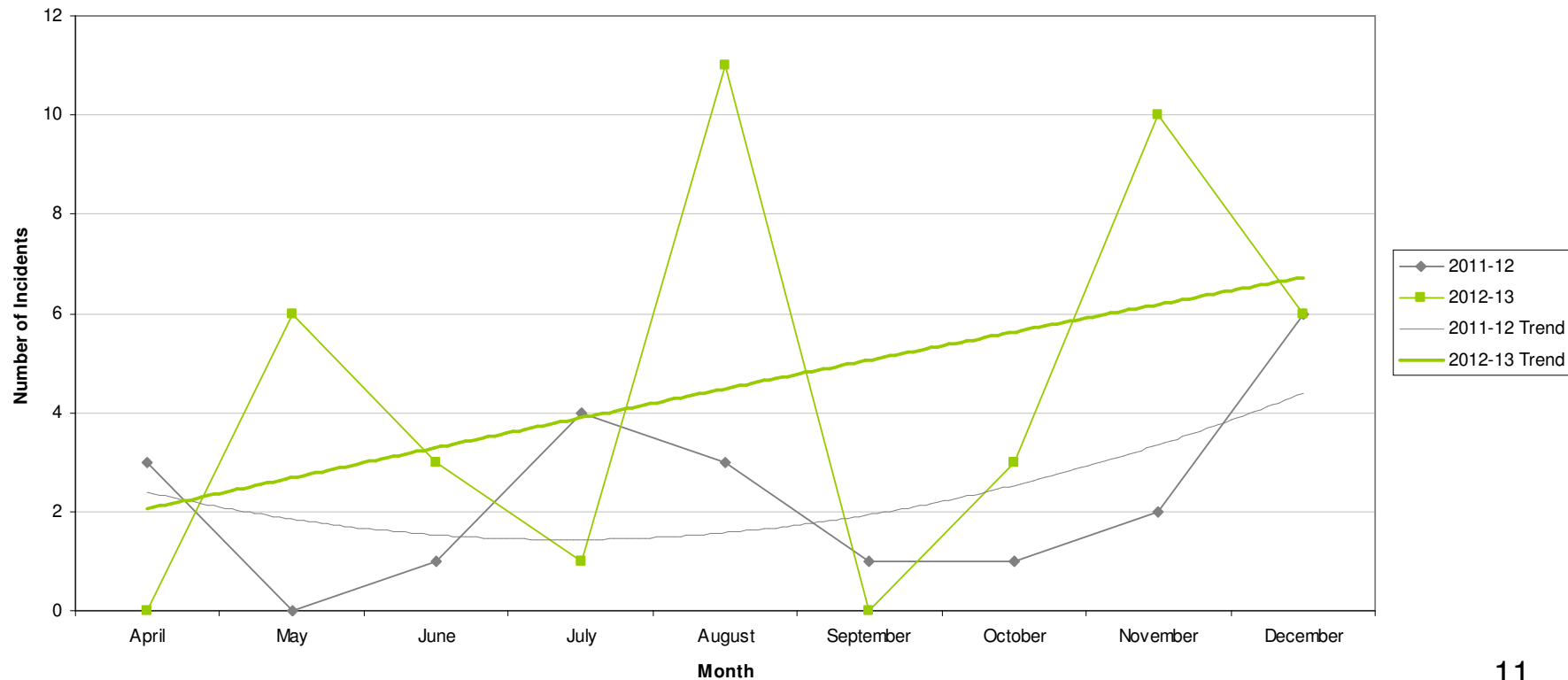


Graffiti Reports

RED		
AMBER	6 incidents	No change
GREEN		

- All data refers to a comparison with the previous year's month
- It is proposed that performance over time graphs be used for each indicator
- Historic data for comparison is not available for dog fouling

Incidents of Graffiti

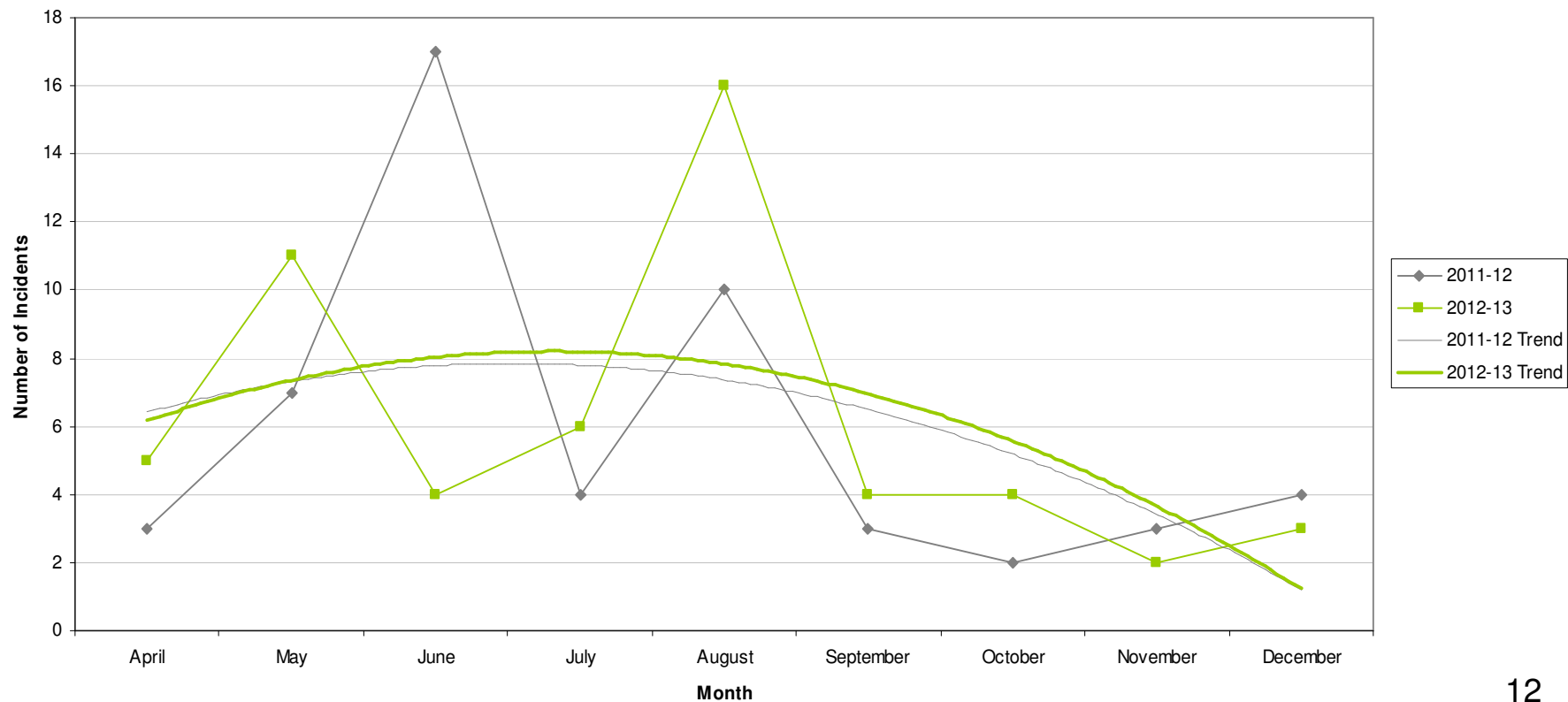


Fly Tipping

RED		
AMBER		
GREEN	3 incidents	Decrease of 1

- All data refers to a comparison with the previous year's month
- It is proposed that performance over time graphs be used for each indicator
- Historic data for comparison is not available for dog fouling

Incidents of Fly Tipping



Unemployment Rate

Area	Oct-12			Change in last month		Change in last year	
	Number	Rate	City Rank	Number	%	Number	%
Arboretum	812	6.9	8	-9	-1.1	46	6
Berridge	1,041	7.1	6	-22	-2.1	90	9.5
Dunkirk and Lenton	260	2.4	19	-9	-3.3	-13	-4.8
Radford and Park	768	4.1	17	2	0.3	19	2.5
Sherwood	542	5	14	-22	-3.9	-77	-12.4
Wollaton East and Lenton Abbey	139	1.4	20	7	5.3	-2	-1.4
Wollaton West	254	2.8	18	-17	-6.3	26	11.4
Aspley	1,140	10.1	1	-34	-2.9	-28	-2.4
Basford	707	6.4	10	4	0.6	17	2.5
Bestwood	987	8.7	4	-6	-0.6	0	0
Bilborough	745	7.1	6	-37	-4.7	-16	-2.1
Bulwell	1,017	9.3	2	-12	-1.2	-2	-0.2
Bulwell Forest	429	4.7	15	-6	-1.4	-36	-7.7
Leen Valley	353	5.1	13	4	1.1	16	4.7
Bridge	707	6.7	9	-13	-1.8	-49	-6.5
Clifton North	387	4.4	16	-7	-1.8	-18	-4.4
Clifton South	507	5.8	12	16	3.3	4	0.8
Dales	864	7.4	5	-13	-1.5	34	4.1
Mapperley	702	6.3	11	0	0	-1	-0.1
St Ann's	1,234	9	3	0	0	45	3.8

This is an edited version of a report produced by: Geoff Oxendale, Information and Research Officer, Nottingham City Council ¹³

NB: Wards are ranked from 1 (highest Rate of JSA claimants) to 20 (lowest Rate).

Housing

Leen Valley Ward - Housing



Anti-social behaviour - Hyson Green (Leen Valley Ward)

Indicator	Current Target	2010/11	2011/12	2012/13		
		Value	Value	Value	Status	Trend
% of ASB cases resolved - Hyson Green	97.6%	100%	97.53%	100%		
% of ASB cases resolved by first intervention - Hyson Green	75%	-	-	77.05%		n/a

Empty properties - Leen Valley Ward

Indicator	Current Target	2010/11	2011/12	2012/13		
		Value	Value	Value	Status	Trend
Average void re-let time for Leen Valley Ward	26	24.56	34	41.47		
Lettable voids Leen Valley Ward	-	4	3	8		
Empty properties awaiting decommission in Leen Valley Ward	-	0	0	0		

Estate star ratings (from Tenant Service Inspectors)

Indicator	2010/11		2011/12		2012/13		
	Value	Status	Value	Status	Value	Status	Trend
Estate star rating - Basford	2 Star		3 Star		3 Star		
Estate star rating - Whitemoor	3 Star		3 Star		3 Star		
Estate star rating - Hyson Green	3 Star		3 Star		3 Star		

Data prepared by Nottingham City Homes Performance Team
 For more information please contact Tricia Quinn, Performance Review Manager on 0115 9157365 or Marcus Parton, Performance Review Officer 0115 915715

Housing

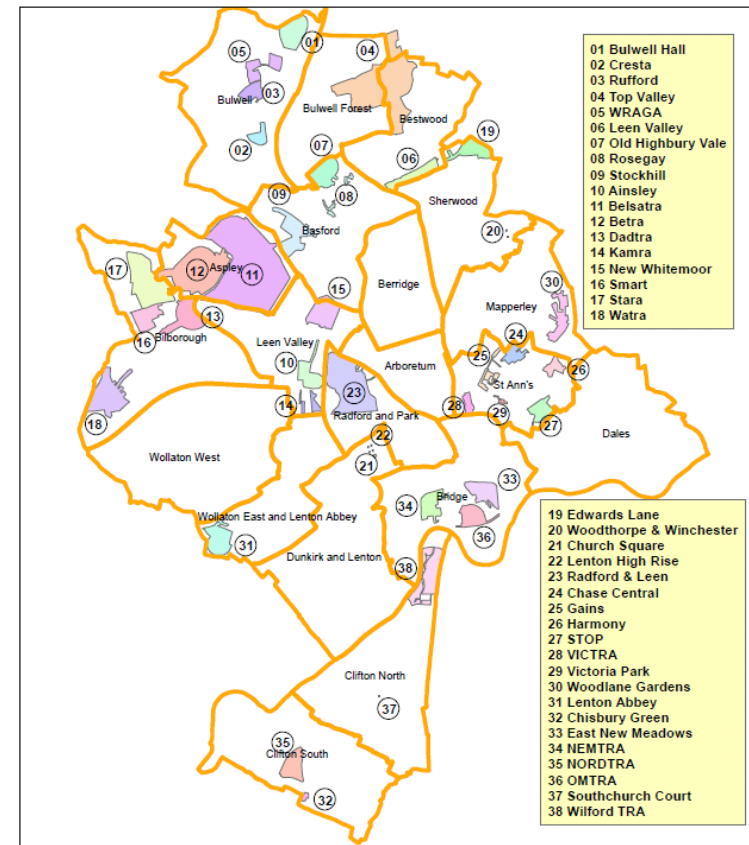
Rent Collection - Hyson Green

Indicator	Current Target	2010/11	2011/12	2012/13		
		Value	Value	Value	Status	Trend
Rent charged that has been collected - Hyson green office area	100.2%	100.7%	101.2%	100.5%		

Key:

- Performance on or exceeding target
- Performance below target
- Data only performance indicator
- Performance has improved compared to two years ago
- Performance has deteriorated compared to two years ago
- Performance unchanged

Map of Tenants and Residents Associations by Ward



Community Protection

In November 2012 in Leen Valley there were two court outcomes. This included two injunctions; one for ASB and one for domestic abuse.

Data has been received from Community Protection and where postcodes have been listed these have been geo-coded and mapped to determine the Ward. All addresses relate to the address of the Perpetrator.

FPNs are not currently available at ward level.

Fire

Table: Fire Rate (per 1000 of population) by ward (previous 12 months)

Ward	All Fire		Property		Secondary		Rank
	Volume	Rate	Volume	Rate	Volume	Rate	
Arboretum	14	1.21	5	0.43	9	0.77	13
Aspley	68	3.90	13	0.75	55	3.16	2
Basford	62	3.84	12	0.74	50	3.10	3
Berridge	44	2.23	19	0.96	25	1.27	10
Bestwood	44	2.58	13	0.76	31	1.82	7
Bilborough	46	2.75	13	0.78	33	1.97	6
Bridge	37	3.63	6	0.59	31	3.04	4
Bulwell	91	5.51	25	1.51	66	4.00	1
Bulwell Forest	43	3.13	12	0.87	31	2.26	5
Clifton North	15	1.15	4	0.31	11	0.84	16
Clifton South	19	1.36	6	0.43	13	0.93	12
Dales	19	1.18	10	0.62	9	0.56	15
Dunkirk and Lenton	11	0.91	5	0.41	6	0.50	18
Leen Valley	25	2.30	3	0.28	22	2.02	9
Mapperley	16	1.06	8	0.53	8	0.53	17
Radford and Park	30	1.48	11	0.54	19	0.94	11
Sherwood	18	1.19	3	0.20	15	1.00	14
St. Ann's	31	2.40	9	0.70	22	1.70	8
Wollaton East and Lenton Abbey	8	0.69	1	0.09	7	0.61	19
Wollaton West	5	0.34	0	0.00	5	0.34	20
Average Rate (of 20 Wards)	2.14		0.57		1.57		

Key:

- Highest
- Second Highest
- Third Highest

The table shows Rate (per 1000 of population) of All Intentional Fire, Secondary Fire and Property Fire over the previous 12 months. Leen Valley has the 9th highest Rate of All Intentional Fire out of the 20 wards.

NB: Wards are ranked from 1 – 20 where 1 is the highest Rate and 20 is the lowest Rate.

Methodology

Data has not been audited or verified and therefore must only be used as a reflection of crime.

Where Crime and ASB is broken down to Ward level this data has been mapped, and using a polygon created for the *Council boundary* of the 'City Centre' this data has been removed where it has impacted on the Wards that crossed into it. Where figures for Rate of the population have been referred to, this has been taken into account for these calculations.

Where possible the most recent data is used, although for some areas this may be a month further in arrears.

Discussions continue with other agencies regarding what further data can be included.